

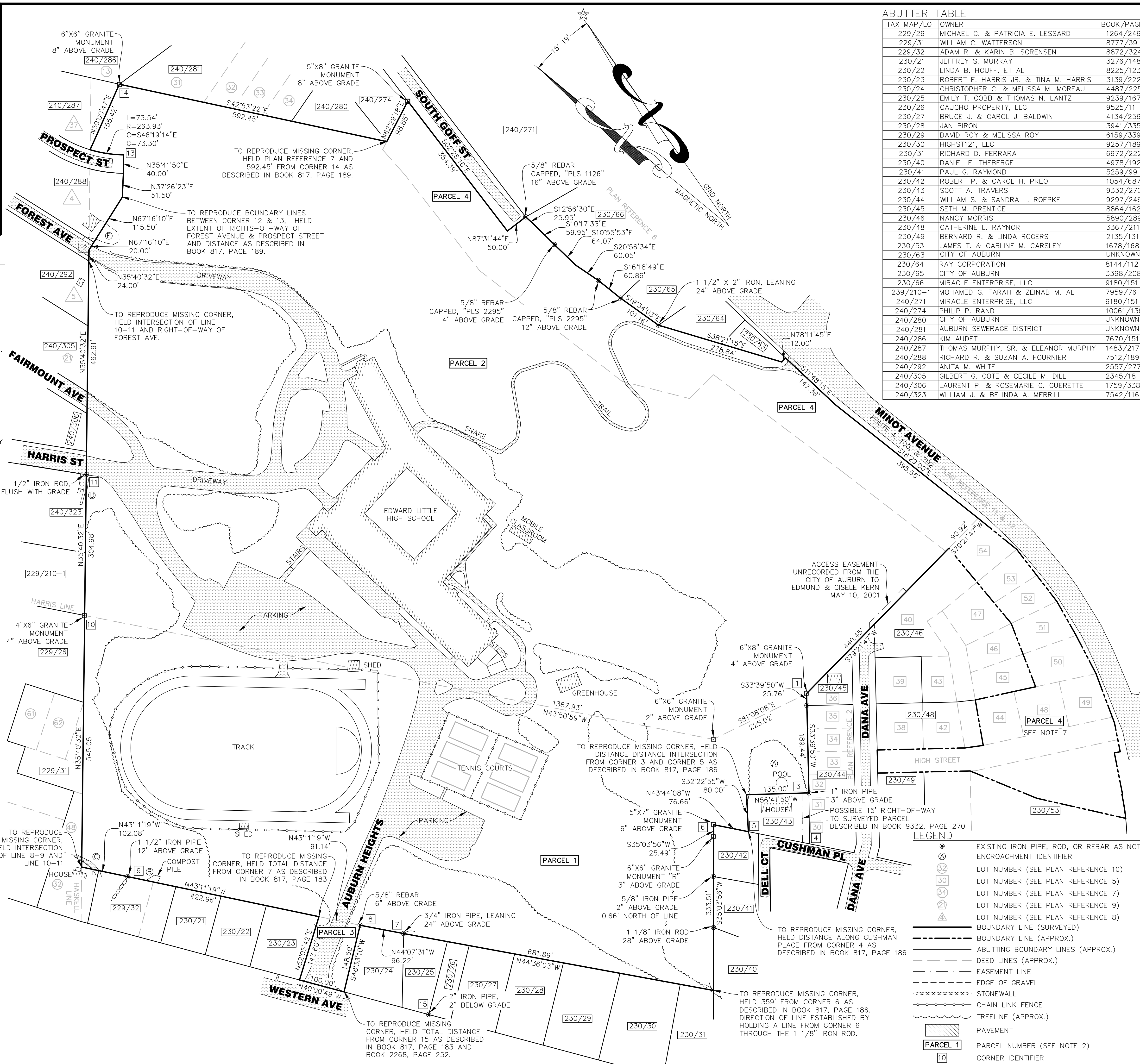
LOCATION MAP 1" = 1/2 MILE

NOTES

- ALL BEARINGS ARE REFERENCED TO MAINE STATE GRID, WEST ZONE, NAD83.
- OWNER OF RECORD AT TIME OF SURVEY: CITY OF AUBURN:  
 PARCEL 1: BOOK 817, PAGE 186  
 PARCEL 2: BOOK 817, PAGE 189  
 PARCEL 3: BOOK 817, PAGE 183  
 PARCEL 4: BOOK 3368, PAGE 210.
- TOTAL AREA: 60.3 ACRES, MORE OR LESS.
- ALL BOOK AND PAGES REFER TO THE ANDROSCOGGIN COUNTY REGISTRY OF DEEDS.
- CITY OF AUBURN: TAX MAP 240, LOT 322.
- ENCROACHMENTS SUMMARY:  
 A. POOL AND LAWN USED BY MAP 230, LOT 43 IS OVER THE PROPERTY LINE.  
 B. A COMPOST PILE USED BY MAP 229, LOT 32 IS OVER THE PROPERTY LINE.  
 C. GRAVEL DRIVEWAY AND HOUSE OWNED BY MAP 229, LOT 31 IS VERY CLOSE, IF NOT OVER THE PROPERTY LINE. ADDITIONAL LOCATION IS REQUIRED TO DETERMINE.  
 D. A PORTION OF THE GARAGE OWNED BY MAP 240, LOT 323 IS OVER THE PROPERTY LINE.  
 E. A GRAVEL PARKING AREA USED BY MAP 240, LOT 288 IS OVER THE PROPERTY LINE.
- THE PURPOSE OF THIS PLAN IS TO SHOW A PARTIAL BOUNDARY SURVEY OF THE EDWARD LITTLE HIGH SCHOOL PROPERTY. ADDITIONAL RESEARCH AND FIELD WORK IS REQUIRED TO DETERMINE THE BOUNDARY LINES WEST OF MINOT AVENUE AND SOUTH OF DANA AVENUE.

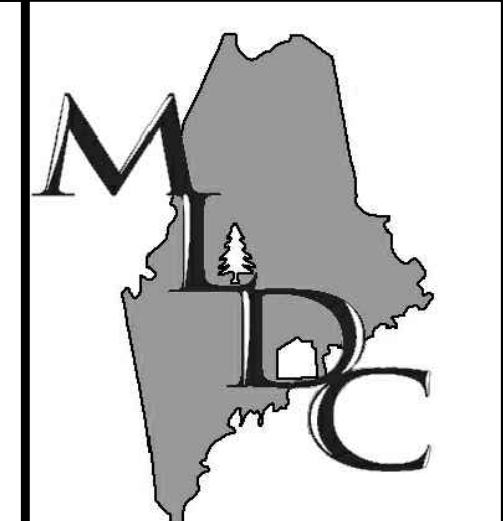
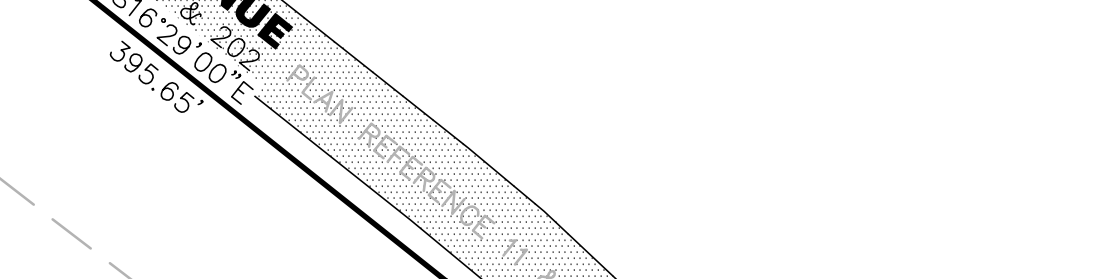
PLAN REFERENCES

- "AUBURN HEIGHTS", DATED MARCH 1892, MADE FOR THE FRANKLIN COMPANY, AND RECORDED IN PLAN FILE HAUB-1.
- "PROPERTY PLAN", DATED SEPTEMBER 7, 1984, MADE FOR JAMES H. SKEES, SURVEYED BY COURBRON GOTTO ASSOCIATES, INC. AND RECORDED IN PLAN BOOK 31, PAGE 28 ON SEPTEMBER 11, 1984.
- "AMENDED PLAN", DATED JUNE 4, 1938, MADE FOR E.F. ABBOTT, PREPARED BY GEO. H. BARRON, ENGINEER, AND RECORDED IN PLAN BOOK 7, PAGE 311 ON OCTOBER 4, 1938.
- "PLAN OF LAND", DATED AUGUST 24, 1940, MADE FOR CUSHMAN REALTY AND MARY DANA ABBOTT, PREPARED BY GEO. H. BARRON, ENGINEER, AND RECORDED IN PLAN BOOK 7, PAGE 356 ON DECEMBER 9, 1940.
- "PLAN OF LAND", REVISED JUNE 21, 1951, MADE FOR CUSHMAN REALTY AND MARY DANA ABBOTT, PREPARED BY BENDTSEN & BEAN, AND RECORDED IN PLAN BOOK 10, PAGE 507 ON JULY 16, 1951.
- "EXISTING CONDITION SCHEMATIC", DATED DECEMBER 2004, MADE FOR MINOT STREET PROPERTIES, LLC, PREPARED BY TECHNICAL SERVICES, INC., AND BEING UNRECORDED.
- "PLAN OF LAND", DATED MARCH 17, 1868, MADE FOR JAMES GOFF, ESQ., PREPARED BY R. DRSSER, AND RECORDED IN PLAN FILE V1B1-20.
- "PLAN OF HOUSE LOTS ON AUBURN HIGHTH", DATED MAY 17, 1860, AND RECORDED IN PLAN FILE V1B1-7.
- "PLAN OF HOUSE LOTS", DATED OCTOBER 1867, SURVEYED BY JOHN READ, AND RECORDED IN PLAN FILE V1B1-22.
- "PLAN OF LAND IN AUBURN, ME", DATED JULY 1, 1874, MADE FOR W. HASKELL, SURVEYED BY KENWAY BROS, AND RECORDED IN PLAN FILE V1B2-35.
- "MAINE STATE HIGHWAY COMMISSION RIGHT OF WAY MAP STATE HIGHWAY 15", DATED JANUARY 1957, AND RECORDED IN PLAN BOOK 15, PAGE 16 ON MARCH 2, 1961.
- "STATE OF MAINE DEPARTMENT OF TRANSPORTATION RIGHT OF WAY MAP STATE HIGHWAY 17", DATED AUGUST 1989, AND RECORDED IN PLAN BOOK 37, PAGE 55 ON FEBRUARY 4, 1993.



TAX MAP/LOT	OWNER	BOOK/PAGE
229/26	MICHAEL C. & PATRICIA E. LESSARD	1264/246
229/31	WILLIAM C. WATTERSON	8777/39
229/32	ADAM R. & KARIN B. SORENSEN	8872/324
230/21	JEFFREY S. MURRAY	3276/148
230/22	LINDA B. HOUFF, ET AL	8225/123
230/23	ROBERT E. HARRIS JR. & TINA M. HARRIS	3139/222
230/24	CHRISTOPHER C. & MELISSA M. MOREAU	4487/225
230/25	EMILY T. COBB & THOMAS N. LANTZ	9239/167
230/26	GAUCHO PROPERTY, LLC	9525/11
230/27	BRUCE J. & CAROL J. BALDWIN	4134/256
230/28	JAN BIRON	3941/335
230/29	DAVID ROY & MELISSA ROY	6159/339
230/30	HIGHST121, LLC	9257/189
230/31	RICHARD D. FERRARA	6972/222
230/40	DANIEL E. THEBERGE	4978/192
230/41	PAUL G. RAYMOND	5259/99
230/42	ROBERT P. & CAROL H. PREO	1054/687
230/43	SCOTT A. TRAVERS	9332/270
230/44	WILLIAM S. & SANDRA L. ROEPKE	9297/246
230/45	SETH M. PRENTICE	8864/162
230/46	NANCY MORRIS	5890/289
230/48	CATHERINE L. RAYNOR	3367/211
230/49	BERNARD R. & LINDA ROGERS	2135/131
230/53	JAMES T. & CARLINE M. CARSLEY	1678/168
230/63	CITY OF AUBURN	UNKNOWN
230/64	RAY CORPORATION	8144/112
230/65	CITY OF AUBURN	3368/208
230/66	MIRACLE ENTERPRISE, LLC	9180/151
239/210-1	MOHAMED G. FARAH & ZEINAB M. ALI	7959/76
240/271	MIRACLE ENTERPRISE, LLC	9180/151
240/274	PHILIP P. RAND	10061/136
240/280	CITY OF AUBURN	UNKNOWN
240/281	AUBURN SEWERAGE DISTRICT	UNKNOWN
240/286	KIM AUDET	7670/151
240/287	THOMAS MURPHY, SR. & ELEANOR MURPHY	1483/217
240/288	RICHARD R. & SUZAN A. FOURNIER	7512/189
240/292	ANITA M. WHITE	2557/277
240/305	GILBERT G. COTE & CECILE M. DILL	2345/18
240/306	LAURENT P. & ROSEMARIE G. GUERETTE	1759/338
240/323	WILLIAM J. & BELINDA A. MERRILL	7542/116

TAX MAP/LOT	OWNER	BOOK/PAGE
230/66	230/66	230/66
230/65	230/65	230/65
230/64	230/64	230/64
230/63	230/63	230/63
230/53	230/53	230/53
230/49	230/49	230/49
230/48	230/48	230/48
230/47	230/47	230/47
230/46	230/46	230/46
230/45	230/45	230/45
230/44	230/44	230/44
230/43	230/43	230/43
230/42	230/42	230/42
230/41	230/41	230/41
230/40	230/40	230/40
230/39	230/39	230/39
230/38	230/38	230/38
230/37	230/37	230/37
230/36	230/36	230/36
230/35	230/35	230/35
230/34	230/34	230/34
230/33	230/33	230/33
230/32	230/32	230/32
230/31	230/31	230/31
230/30	230/30	230/30
230/29	230/29	230/29
230/28	230/28	230/28
230/27	230/27	230/27
230/26	230/26	230/26
230/25	230/25	230/25
230/24	230/24	230/24
230/23	230/23	230/23
230/22	230/22	230/22
230/21	230/21	230/21
230/20	230/20	230/20
230/19	230/19	230/19
230/18	230/18	230/18
230/17	230/17	230/17
230/16	230/16	230/16
230/15	230/15	230/15
230/14	230/14	230/14
230/13	230/13	230/13
230/12	230/12	230/12
230/11	230/11	230/11
230/10	230/10	230/10
230/9	230/9	230/9
230/8	230/8	230/8
230/7	230/7	230/7
230/6	230/6	230/6
230/5	230/5	230/5
230/4	230/4	230/4
230/3	230/3	230/3
230/2	230/2	230/2
230/1	230/1	230/1



**MAIN-LAND**  
 DEVELOPMENT  
 CONSULTANTS, INC.

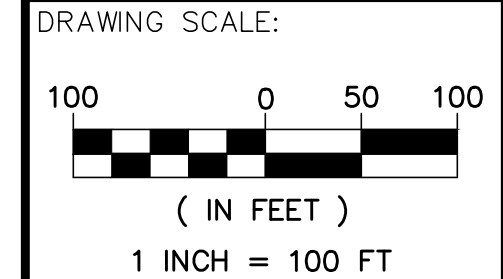
69 MAIN ST. LIVERMORE FALLS, MAINE  
 PH: (207) 897-6732 FAX: (207) 897-5404  
 WWW.MAIN-LANDDCI.COM

PLAN SHOWING A PARTIAL  
 BOUNDARY SURVEY  
**EDWARD LITTLE  
 HIGH SCHOOL**  
 HARRIS STREET, CITY OF AUBURN,  
 COUNTY OF ANDROSCOGGIN,  
 STATE OF MAINE

OWNER OF RECORD  
**CITY OF AUBURN**

MADE FOR  
**AUBURN SCHOOL  
 DEPARTMENT**

C/O KATY GRONIN, SUPERINTENDENT,  
 60 COURT STREET,  
 AUBURN, MAINE 04210



REVISION NOTES:

NO.	DESCRIPTION
1	AS SHOWN
2	
3	
4	
5	
6	
7	
8	
9	
10	
11	
12	
13	
14	
15	
16	
17	
18	
19	
20	
21	
22	
23	
24	
25	
26	
27	
28	
29	
30	
31	
32	
33	
34	
35	
36	
37	
38	
39	
40	
41	
42	
43	
44	
45	
46	
47	
48	
49	
50	
51	
52	
53	
54	

PROJ. MGR: \_\_\_\_\_ CLB  
 DRAWN BY: \_\_\_\_\_ CLB & JML  
 CHECKED BY: \_\_\_\_\_ T.J.G. CLB  
 SURVEY NO. \_\_\_\_\_ N/A  
 SURVEY DATE: \_\_\_\_\_ 2019-09  
 SUBMISSION DATE: \_\_\_\_\_ 2019-10-09  
 SUBMITTED FOR: \_\_\_\_\_ FINAL

**PARTIAL  
 BOUNDARY  
 SURVEY**

SEAL:

CHARLES L. BUKER PLS #2597  
 DRAWING NO. **S1.1**  
 M.L.D.C. NO. 19-181 1 OF 1

ANDROSCOGGIN COUNTY SS REGISTRY OF DEEDS  
 RECEIVED: \_\_\_\_\_  
 AT \_\_\_\_\_ H \_\_\_\_\_ M \_\_\_\_\_ M \_\_\_\_\_  
 RECORDED IN PLAN BOOK \_\_\_\_\_, PAGE \_\_\_\_\_  
 ATTEST: \_\_\_\_\_ REGISTER